



SHELTER MADE POSSIBLE

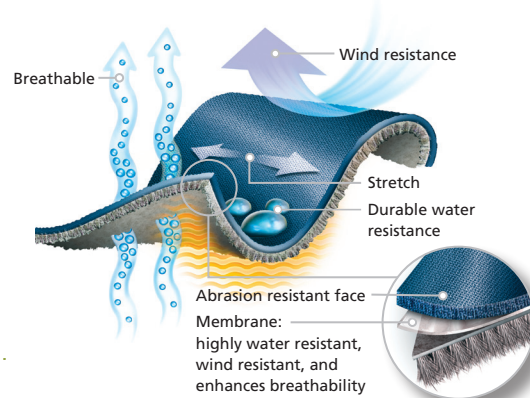
Polartec® Power Shield® Pro

The Epitome of Soft Shell Performance

In 1998 Polartec launched Polartec® Power Shield® and the soft shell revolution. It was developed in recognition of the fact that 90% of the time you are outside, the weather isn't that bad. So there is great benefit in giving up a little weather protection, in order to get a lot more breathability.

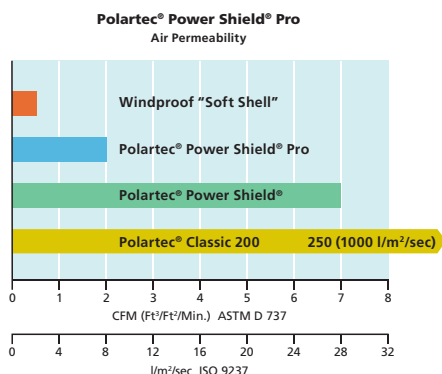
In 2010, we are building on that product history by adding real water resistance to our soft shells with the launch of Polartec® Power Shield® Pro. Polartec® Power Shield® Pro combines never before seen levels of air permeability with durable hydrostatic resistance to keep you dry both from within and from out.

Ideal Uses: Polartec® Power Shield® fabrics are ideal for skiing, snowboarding, winter climbing, and back-country trekking. They are used in jackets, pants, bibs, hats, and gloves. It's the outerwear that gets worn, not carried.



How does it work?

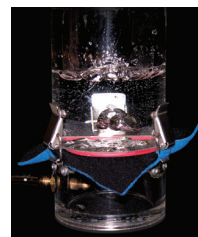
Polartec® Power Shield® Pro fabrics feature a smooth, tightly woven face for great abrasion resistance, and a polyester back for a high warmth-to-weight ratio. The membrane in the middle enables the fabric to block 99% of the wind. The remaining 1% circulates within the fabric which greatly enhances moisture vapor transmission, improving breathability and reducing the risk of heat stress buildup. The charts below show how the proprietary Power Shield® Pro membrane lets just 2cfm through the fabric, but significantly improves 'real world' or dynamic breathability. Water Vapor Flux measures moisture vapor transmission through a fabric in g/m²/24hours. Higher numbers mean a fabric is more breathable. Polartec® Power Shield® fabrics have the best breathability in the soft shell market. In fact, Polartec® Power Shield® Pro fabrics are 30-50% more breathable than windproof soft shells in dynamic or active conditions.



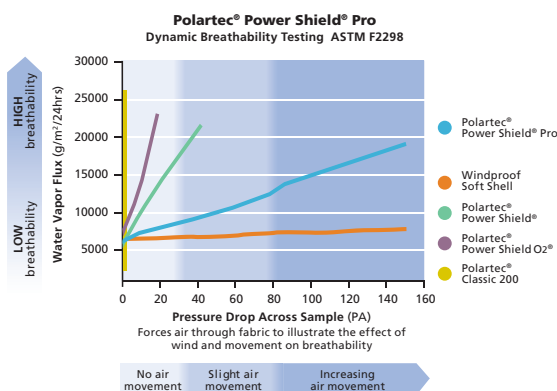
Highly breathable & highly water resistant

The biggest advance of the new Polartec® Power Shield® Pro membrane is the addition of a hydrostatic head, a.k.a. real water resistance. Polartec® Power Shield® Pro delivers an initial 5,000mm hydrohead (ISO 811, AATCC 127) and remains durably water resistant to a minimum of 3,000mm for life. This level of water resistance exceeds the requirement for seam sealing on a waterproof breathable shell (3psi or 2100mm) so you can be assured of its performance.

The combination of water resistance and breathability of Polartec® Power Shield® Pro offers a great advance in soft shell comfort.



Water resistant to 5,000mm yet air can still pass through.



Technical Highlights

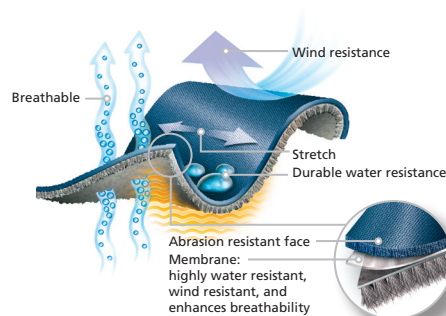
- Blocks 99% of the wind to prevent wind chill, but allows enough air to circulate to keep you from overheating
- Highly breathable; relieves heat stress buildup during action sports
- Highly water resistant
- Water repellent surface sheds rain and snow
- Extremely abrasion resistant face for long lasting durability; fabric maintains its form and function regardless of abrasive contact
- Stretch for active comfort
- Creates less noise than a traditional shell
- Provides warmth without the weight and bulk of traditional insulating fabrics
- Machine washable



Polartec® Power Shield® Pro

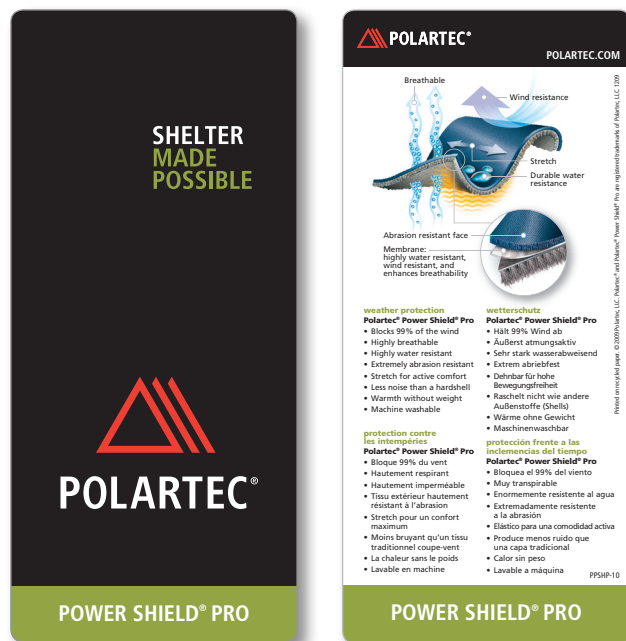
In 2010, we are building on product history by adding real water resistance to our soft shells with the launch of Polartec® Power Shield® Pro. Polartec® Power Shield® Pro combines never before seen levels of air permeability with durable hydrostatic resistance to keep you dry both from within and from out.

- Blocks 99% of the wind
- Highly breathable
- Highly water resistant
- Extremely abrasion resistant
- Stretch for active comfort
- Less noise than a hardshell
- Warmth without weight
- Machine washable



Hang Tags

Garment and Accessory tags are available with this fabric.



PPSH-10



PPSHACC-10

Woven labels



PLPPSHPS-10



PLPPSHPV-10

Heat Transfer Labels

Clear background, red peaks, and either black or white lettering.



PHTPROB-10 (BLACK)



PHTPROW-10 (WHITE)